

技术参数/TECHNICAL DATA:

应用材料/MATERIAL EMPLOYED

阀体/BODY: 钢/Steel

阀芯/VALVES: 强化硬质钢/Hardened Steel

密封/SEALS: 丁腈胶/NBR

适用工作环境/OPERATIONAL RANGE

安装/MOUNTING

按需/as preferred

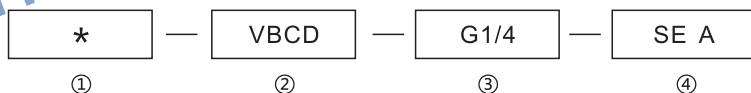
温度/TEMPERATURES

理想工作温度: +40°C~+70°C/Ideal operating range between +40°C and +70°C

最高工作温度: +90°C/Max operating temperature +90°C

最低/最高环境温度: -20°C~+60°C/ Min/Max environment temps -20°C and +60°C

型号说明/MODEL CODE:



① 材料/Material: A: 铝/aluminium 空白: 碳钢/Carbon steel

② 液压平衡阀系列代号/single overcenter valve series code: VBCD-SE A型/VBCD-SE A type

③ 连接螺纹尺寸/connection thread dimension: BBSP

④ 单向平衡阀/ The Single overcenter valves

型号 /TYPE	最大流量 (L/min)	最大压力 (bar)		先导比 (pilot ratio)	V1-V2 C1-C2
		钢 /steel	铝 /aluminium		
VBCD-G1/4-SE A	20	350	210	4.5:1	G1/4
VBCD-G3/8-SE A	40				G3/8
VBCD-G1/2-SE A	60				G1/2

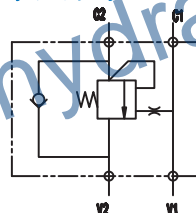
型号 /TYPE	L	L1	L2	L3	L4	L5	L6	N	H	S
VBCD-G1/4-SE A	110	150	90	90	20	50	55	Φ8.5	60	30
VBCD-G3/8-SE A	110	150	91	91	20	50	55	Φ8.5	60	30
VBCD-G1/2-SE A	110	150	91	91	20	50	57.5	Φ8.5	65	35

应用/APPLICATIONS:

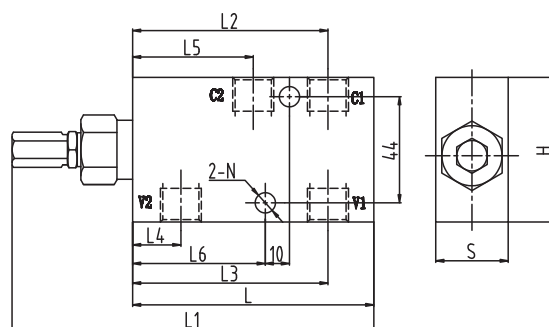
平衡阀是用来控制执行机构在一个方向(单平衡)或两个方向(双平衡)的停止和运动。

The overcenter valves are employed to control the block and the motion of an actuators in one direction(single overcenter valves) or in both the directions(dual overcenter valves)

图形符号/SYMBOL:



外形尺寸/OVER DIMENSION:



流量曲线图/FLOW DIAGRAM

